

# Cary Dance Productions

Established 1995

**CELEBRATING 27 YEARS OF DANCE!**



## Fall Session 2021-2022

Explore the schedule, register for classes, and edit payment information all at your convenience through the CDP Parent Portal! Visit our website ([carydance.com](http://carydance.com)) and click on the “Parent Login” tab. If you can’t remember your password, please click “reset password” to access your account.

At this time, masks will be optional for CDP dancers and staff during the 2021-2022 season. Please visit our website for details and reach out to [info@carydance.com](mailto:info@carydance.com) with any questions.

## Tuition and Payment Information

Tuition is based on a 10-month calendar beginning August 18th and ending with our spring recital tentatively scheduled for June 10th-11th 2022 at Raleigh’s Memorial Auditorium. Tuition can be paid monthly or in full at the start of the season. It is important to understand that tuition is not based on a “four class per month” rate, as some months may fluctuate due to holidays and inclement weather; instead, tuition is based on the annual cost for the classes scheduled, divided into 10 payments. Monthly tuition is required regardless of absences — including missing class for vacation or illness. Your first tuition payment (drafted upon registration) will be considered your August/June tuition fee. Each payment after will be drafted on the 1st of the month (September-May).

Tuition is based on the total amount of class time per student.  
Example: If one dancer is taking two 30 minute classes, the tuition payment would be for 1 hour per month (\$80).

Upon registration, the following fees will be drafted from the payment information stored on file: First tuition payment (considered half August/half June), studio registration fee (\$50), and costume deposits (\$25 per dance).

Starting September 1st, tuition will be due on the 1st of each month and considered late after the 5th. Accounts will be charged a \$10 late fee if they are not paid in full by the 5th. **Credit card/Bank account information is required for registration. Please make sure your payment information is up to date and that your account is ready for each monthly draft — a \$35.00 decline fee will be charged to accounts we are unable to process for any reason.**

Final costume balances will be announced mid-October. Your remaining costume balance will be drafted with your November tuition on November 1st.

Incidentals that are charged to your account (t-shirts, tights, shoe bows, etc) will be charged to your account and auto-drafted during the next billing cycle.

*Please Note: If CDP received a NSF or expired/cancelled/declined card notice from your credit/ banking provider, a \$35 dollar fee will be charged to your account.*

### 2021-2022 TUITION RATES

<b>30 min</b>	<b>\$75</b>	<b>1 3/4 hr</b>	<b>\$105</b>
<b>45 min</b>	<b>\$80</b>	<b>2 hr</b>	<b>\$115</b>
<b>1 hour</b>	<b>\$85</b>	<b>2 1/4 hr</b>	<b>\$125</b>
<b>1 1/4 hr</b>	<b>\$90</b>	<b>2 1/2 hr</b>	<b>\$135</b>
<b>1 1/2 hr</b>	<b>\$100</b>	<b>2 3/4 hr</b>	<b>\$145</b>

\$50 registration fee and first tuition payment are non-refundable.

After 1 3/4 hours of class, tuition will increase by \$10 per additional 15 minutes of class time, until 4 hours, at which tuition will increase by \$5 per additional 15 minutes of class time.

## Costume Payment

All registered students will be required to participate in the spring recital. Students receive a separate costume for each class in which they are enrolled (excluding some Ballet, Tap, Tumble classes who will be charged only one costume payment. These classes will perform one routine only in spring recital). On average, total costume cost per dance can be estimated to be \$65-\$85. A \$25 costume deposit is required for each costume and is deducted from the total price of the costume. Full costume balances are due November 1st. Your remaining costume balance will be announced mid-October and drafted from the payment information stored on file on November 1st. A written notice must be submitted before October 31st to receive a refund for costume payment.

Recital information will be available as we approach the event.



## Family/Tuition Discounts

Families with two or more dancers enrolled, are eligible for a FAMILY DISCOUNT! For two children you will receive 10% off your total tuition. For three or more children you will receive 15% off your total tuition amount. This tuition discount is available for immediate family members only.

A 5% discount will be deducted for tuition paid in full at the time of registration only.

## Withdrawal

A two-week notice letter is required for any student who wishes to withdraw from classes at CDP and stop tuition payments. This letter can be submitted through email ([info@carydance.com](mailto:info@carydance.com)). After October 31st costume deposits are non-refundable. Please note, full tuition payment is still required for the month in which the student drops his/her classes. If your child withdraws after the recital costume has been ordered we will not buy back your costume. We will contact you to pick up your costume when it arrives.

## Inclement Weather

In the case of inclement weather, we operate on the Wake County Public School policy. If Wake County Schools are closed due to inclement weather, the studio will be closed also (unless we inform otherwise). *Feel free to check our Facebook and Instagram pages for immediate updates!* Due to scheduling constraints, we are unable to reschedule entire classes. However, students may attend an appropriate class at their convenience in order to make up for the last class missed. We do not refund or pro-rate tuition due to inclement weather closings.



683-A Cary Towne Blvd. Cary, NC 27511

[www.carydance.com](http://www.carydance.com)

## Class Attire

All students are required to wear dance-specific clothing (i.e., leotard and tights, dance pants, leggings, tank tops, etc). Appropriate class attire, tights, shoes, leotards, etc, are available for purchase at local dance shop, Releve Dancewear. **Releve Dancewear will be hosting a CDP DISCOUNT WEEK August 9th-15th.**

All shoe requirements are listed on our fall class schedule.

All students must have their hair pulled back neatly and away from their face in a pony tail or bun.

## Make-Up Classes

If for any reason your dancer is unable to make it to class, dancers will have the option to attend a class of similar age and skill level *within two weeks of the class missed*. There are no refunds or discounts for classes missed. In consideration of the health and safety of our dancers, CDP may decide to limit make up class opportunities. If you would like to make-up a class, please inquire in the office for a class and time available, or send an email to [info@carydance.com](mailto:info@carydance.com). This will be handled on a case-by-case basis.

### CDP WILL BE CLOSED:

**Labor Day:** September 6th

**Thanksgiving:** November 24th-28th

**Winter Break:** December 20th-January 2nd

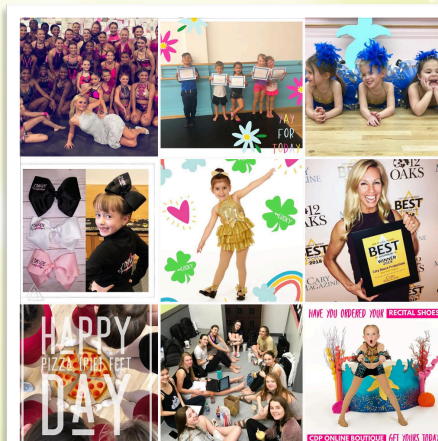
**Spring Break:** April 11th-17th

**Memorial Day:** May 30th

## Follow Us! Like Us! Love Us!

CDP is very active on Facebook and Instagram!! Like our Facebook page and follow us on Instagram for all the recent updates and exciting announcements!! @carydance

Post your own CDP pictures!! #123CDP



(919) 467-7040

[info@carydance.com](mailto:info@carydance.com)